



THE VALE
L O N D O N

CONTENTS

Pg.02	INTRODUCTION
Pg.03	TASSEL BERRY WALLPAPER
Pg.05	KUBB
Pg.07	PANAMANIA WALLPAPER
Pg.11	VALE STRIPE
Pg.14	LILY STRIPE WALLPAPER
Pg.15	LILY STRIPE
Pg.17	LILY STRIPE WALLPAPER
Pg.19	LION TOILE
Pg.25	LION TOILE WALLPAPER
Pg.29	MARBLE TILE 01 - PEBBLE
Pg.30	SUGARBUSH - PEBBLE
Pg.31	MARBLE TILE 03 - OLIVE
Pg.33	SUGARBUSH - SILVER
Pg.34	MARBLE TILE 02 - CREAM
Pg.35	MARBLE STRIPE WALLPAPER
Pg.37	TIMELESS LINEN



THE VALE LONDON

The Vale London was founded in 2017 by Melinda Marquardt. After working in sales for an American textile company for seven years, she decided to start up her own business.

Partnering her education in fine art with her many years of sales experience, Melinda created the Vale London to provide exquisite textiles and wallpapers to the luxury interiors market.

Each pattern starts out as an original piece of art work; illustrated by hand and produced by the finest mills. Each meter of fabric or roll of wallpaper is a piece of art for the home. Texture, colour and design work symbiotically to create each unique piece. Melinda creates timeless designs that will adorn windows and walls for many years.



TASSEL BERRY WALLPAPER

Tassel Berry is a mixture of watercolour and pen drawings that have been masterfully translated into a stunning wallpaper. This work of art is created using digital printing on a metallic silver sisal. The scene depicts African Grey Parrots perching on the branches of the Tassel Berry tree.



TASSEL BERRY

Pattern: Tassel Berry

Colour: Patriot

Composition: Sisal Craftpaper-metal

Width: 90cm

Horizontal Repeat: 88cm

Vertical Repeat: 81cm

Uses: Wallpaper



KUBB

The inspiration for Kubb comes from the traditional Kuba cloth of Western Africa. Originally this cloth is made using the leaves of the raffia tree which are hand cut, woven and dyed using fermented mud. Kubb utilises the primitive shapes and simple geometrics of the traditional Kuba cloth but in an updated and modern colour palette. The base cloth is a ribbed cotton screen printed with this season's soft and liveable colours.



Left: Kubb - Earth, above: Kubb - Pebble



Above: Kubb - Sage



PANAMANIA WALLPAPER

Panmania is influenced by a multitude of different cultures, objects and textiles. The original idea for the mask illustrations comes from Emberá masks that are woven by the Emberá tribe in the rainforests of Panama.

Pattern: Panamania
Colour: Earth
Composition: non-woven
Width: 73cm
Horizontal Repeat: 73cm
Vertical Repeat: 67cm
Uses: Wallpaper

Each mask is woven by hand from palm leaves and hand dyed with natural substances. Each weaver brings their own flare to each piece, making them unique pieces of art. The Emberá tribe use these masks in many local ceremonies as a way to link themselves to the spirit world during religious rituals.

In the studio of The Vale, each mask was illustrated using shellac inks. These pieces of art were then taken to the mill to explore the best way to bring these drawings to the world of home decoration. It made sense to digitally print this pattern to retain the sharp details of the original drawings.

Panamania plays with the idea that palm leaves are used all over the globe by many different cultures. This useful fiber is 100% natural, sustainable and extremely diverse, making it a central tool to the lives of people all over the world.





Above from left to right: Vale Stripe, Lily Stripe, Lily Stripe Wallpaper all in Chestnut & Kubbe - Earth.



Left: Panamania Wallpaper, above: Original sketches for the concept of Panamania Wallpaper.



VALE STRIPE

A timeless, multi-purpose stripe designed to be used in both traditional and modern applications. Perfect for headboards, throw pillows, upholstery and drapery. Available in four soft and useable colours, Vale Stripe coordinates with every pattern in The Oakley Collection.



Pattern: Vale Stripe

Colour: Silver, Chestnut, Dark Olive, Pebble

Composition: 100% cotton

Width: 137cm

Horizontal Repeat: 2cm

Vertical Repeat: 2cm

Cleaning: Dry Clean Only

Uses: Drapery, Upholstery

Tests: 30,000 Martindale

Vale Stripe is a timeless and versatile pattern. This 100% cotton jacquard is woven with the most luxurious threads, giving it a lavish finish. Each undulating stripe varies slightly in tone adding depth and intrigue. This pattern can be used for drapery or upholstery. We recommend coordinating it with pattern Lion Toile to give it a modern twist.



Above left to right: Kubb - Sage, Timeless Linen - Sage, Lily Stripe - Sage. Right: Lily Stripe WP - Sage



Bottom left: Vale Stripe - Dark Olive, centre: Lion Toile - Fern, top: Timeless Linen - Dark Olive





LILY STRIPE

A dynamic design that translates beautifully into four colourways. From dark chestnut brown to light pebble blue, this pattern will complement an array of colour palettes throughout the house.



Pattern: Lily Stripe

Colour: Dark Olive, Chestnut, Pebble, Sage

Composition: 100% Linen

Width: 150cm

Horizontal Repeat: 25cm

Vertical Repeat: 50cm

Cleaning: Washable 30°

Uses: Multipurpose, 20,000 Martindale

Lily Stripe is a modern take on the traditional botanical textile. Originally a still life drawing, this bold stripe shows off the intricate details of the original illustration. This textile is extremely dynamic. It's organic and structured, feminine and masculine, bold and soft all at the same time. Lily stripe shows off the skill of the artist through the medium of digital printing. Every detail is apparent in this high-quality print.





LILY STRIPE WALLPAPER

Pattern: Lily Stripe

Colour: Pebble

Composition: Non-woven

Width: 68.5 cm

Horizontal Repeat: 68.5 cm

Vertical Repeat: 67.3 cm

Uses: Wallpaper



LION TOILE

Lion Toile is a combination of botanical and animal illustrations with accents of marbling. These highly detailed pen drawings translate well to the medium of digital printing. Each colour is created using the ancient Asian technique of marbling.





LION TOILE - FERN



LION TOILE - CREAM



LION TOILE - PEBBLE

Pattern: Lion Toile
Colour: Pebble, Fern, Cream
Composition: 100% Linen
Width: 150cm
Horizontal Repeat: 47cm
Vertical Repeat: 78cm
Cleaning: Washable 30°
Uses: Multipurpose, 20,000 Martindale

Marbling is the art of aqueous surface design to create patterns similar to smooth marble or other kinds of stone. The patterns are created by floating paint in various colours over a thick solution called size. A pre-prepared piece of fabric or paper is then placed on top of the design to transfer onto its surface. The colours that are poured onto the size can be manipulated to create different patterns and designs.

Paper Marbling is a technique that has been developed by many different cultures across the globe for many years. Dating back to 12th Century Japan, the technique was brought through the middle east and into Europe in the 17th century and is still used today in modern applications.

The base cloth is a very high quality linen that drapes beautifully and shows off digital prints exceptionally well. The print is crystal clear and the hand of artist comes across beautifully.





Left: Lion Toile - Pebble, below: Vale Stripe - Pebble





LION TOILE WALLPAPER

As a perfect coordinate to Lion Toile on Linen, this wallpaper packs a punch. The fine line work is crisp and sharp and the colours are bright and bold. It is printed on the highest quality non-woven substrate making it easy to install and take down.

Pattern: Lion Toile Wallpaper

Colour: Pebble, Fern, Cream

Composition: Non-woven wallpaper

Width: 52cm

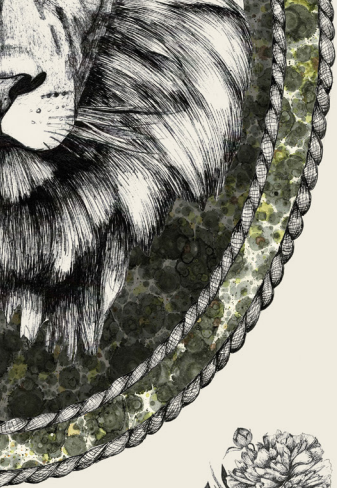
Horizontal Repeat: 52cm

Vertical Repeat: 85.5cm

Uses: Wallpaper









MARBLE TILE 01 WALLPAPER

Printed on Mica, Marble Tile 01 coordinates with Lion Toile - Pebble. The pebble colourway is a mirrored pattern that has a modern psychedelic feel. As the Mica catches the light, the pattern becomes reminiscent of Kaleidoscope patterns.



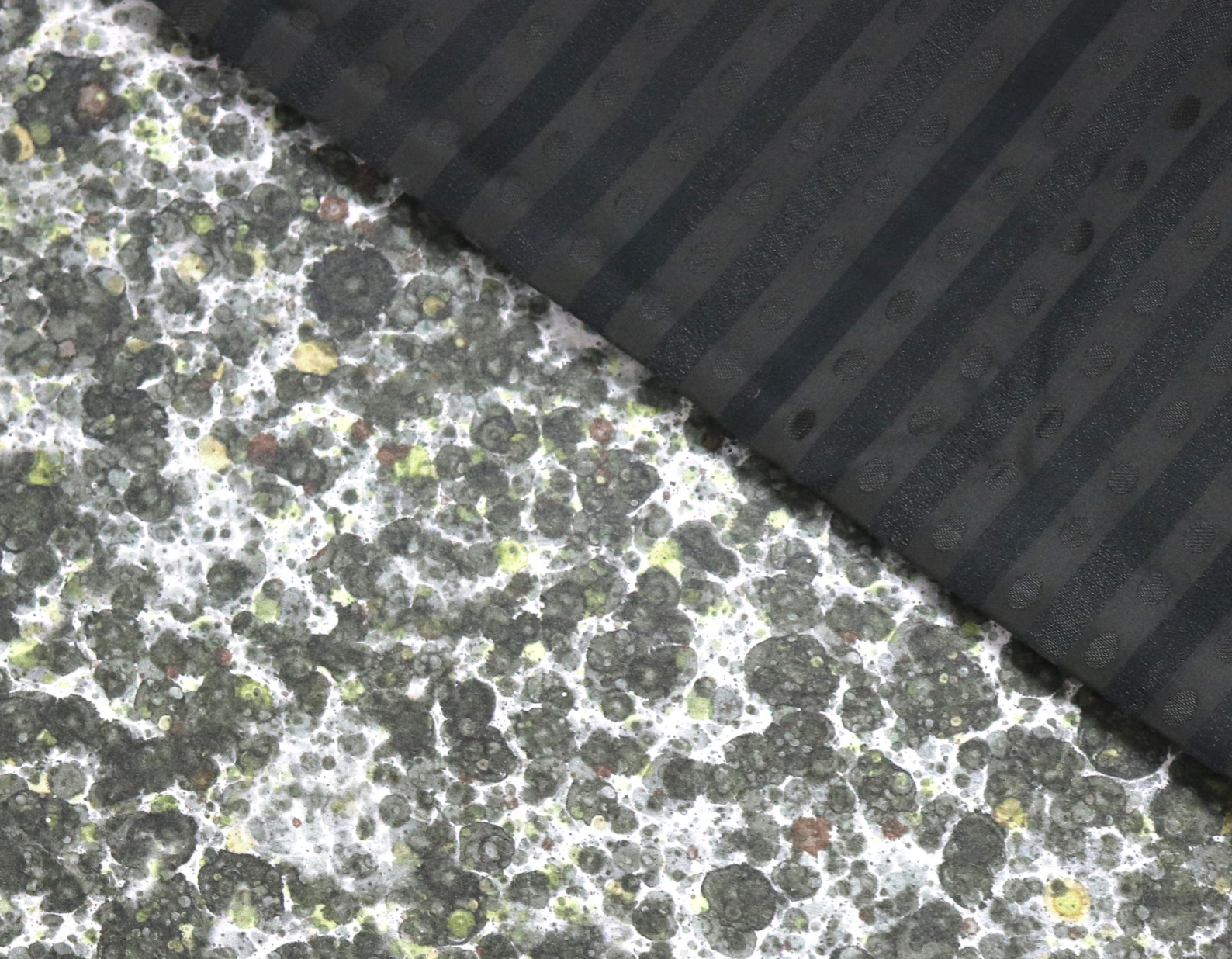
SUGARBUSH

Originally found in South Africa, the Sugarbush, or more commonly called Protea, inspired this beautiful embroidery. The name Protea is after the Greek God Proteus, who could change his form at will. The flower represents change and hope.

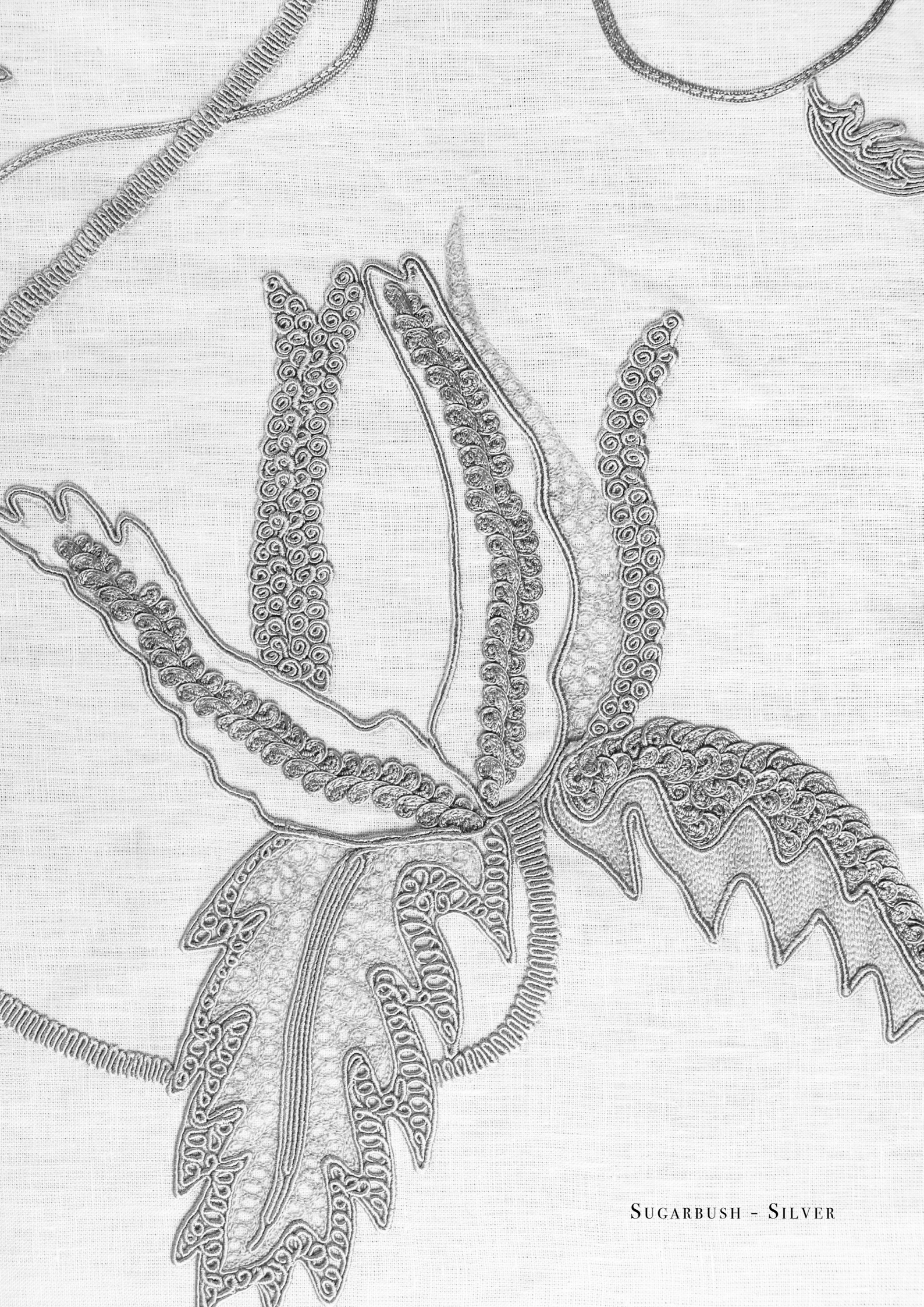


MARBLE TILE 03 WALLPAPER

Marble Tile 03 coordinates with Lion Toile - Fern. This type of marbling was created by splattering different shades of paint onto the surface of a marbling bath. This pattern was perfected by a professional engraver to ensure an invisible repeat. The finished effect is an endless view of perfectly marbled paper.



Above: Vale Stripe - Dark Olive and Timeless Linen - Dark Olive



SUGARBUSH - SILVER



MARBLE TILE 02 WALLPAPER

Marble Tile 02 is also printed on Mica, a natural mineral that creates an opulent sparkle. Swirls of Silver, Gold and Bronze dance across the surface of this pattern emulating the natural formations found in marble. Marble Tile 02 is a perfect coordinate to Lion Toile in colour Cream.



MARBLE STRIPE WALLPAPER

The original art work for marble stripe was created using traditional marbling methods. This stripe bridges the gap between soft organic shapes and sharp geometric patterns. The mica ground creates depth and warmth to the pattern making it a truly luxurious paper. This timeless design softens any room and complements many colour palettes.





TIMELESS LINEN

Strong, soft and dynamic, Timeless Linen is suitable for upholstery even in high-traffic areas of the house. This luxurious linen is also washable and drapes beautifully. Available in five colours, this multipurpose fabric will brighten any room and complement every pattern in The Oakley Collection.



